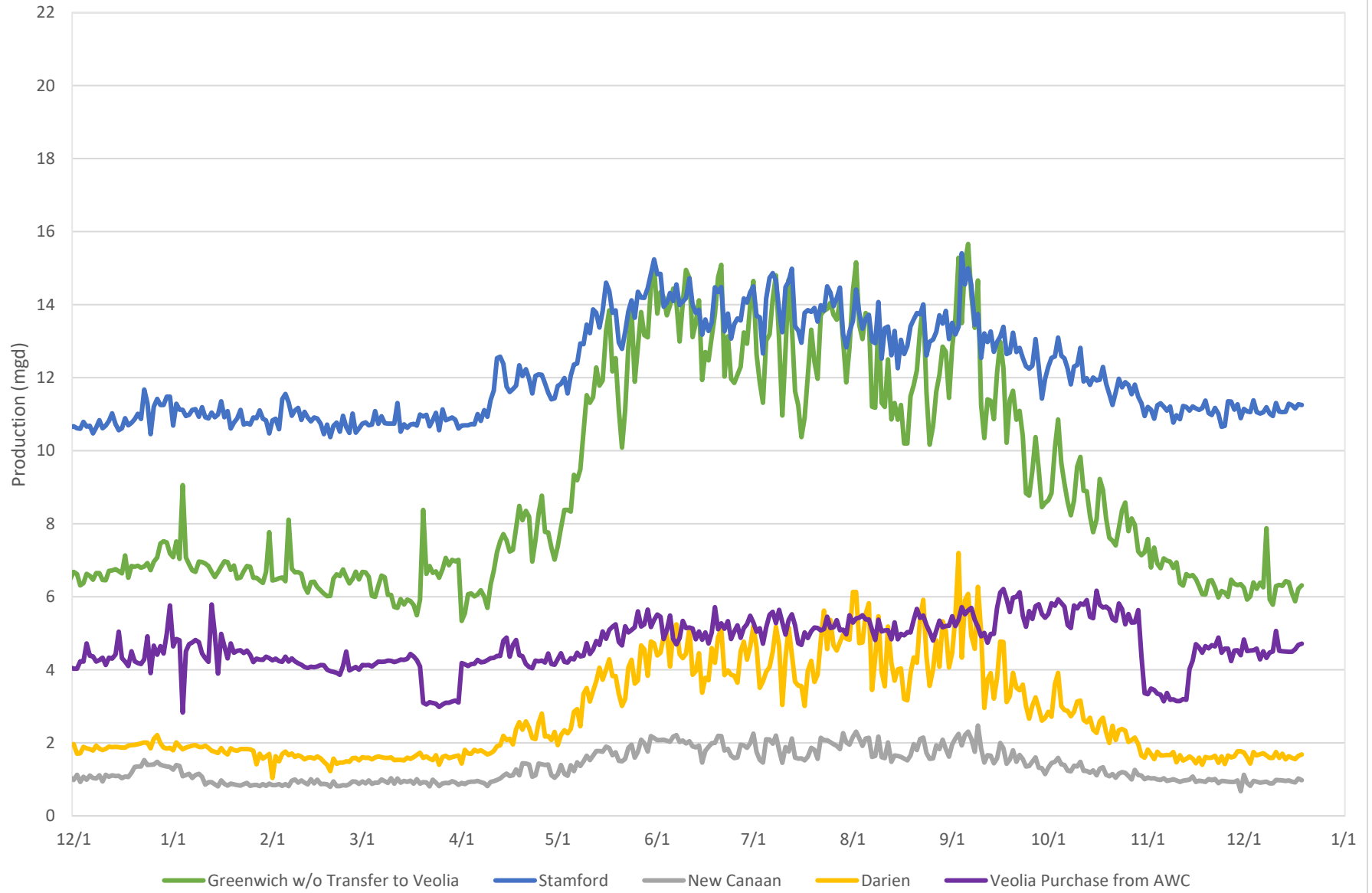


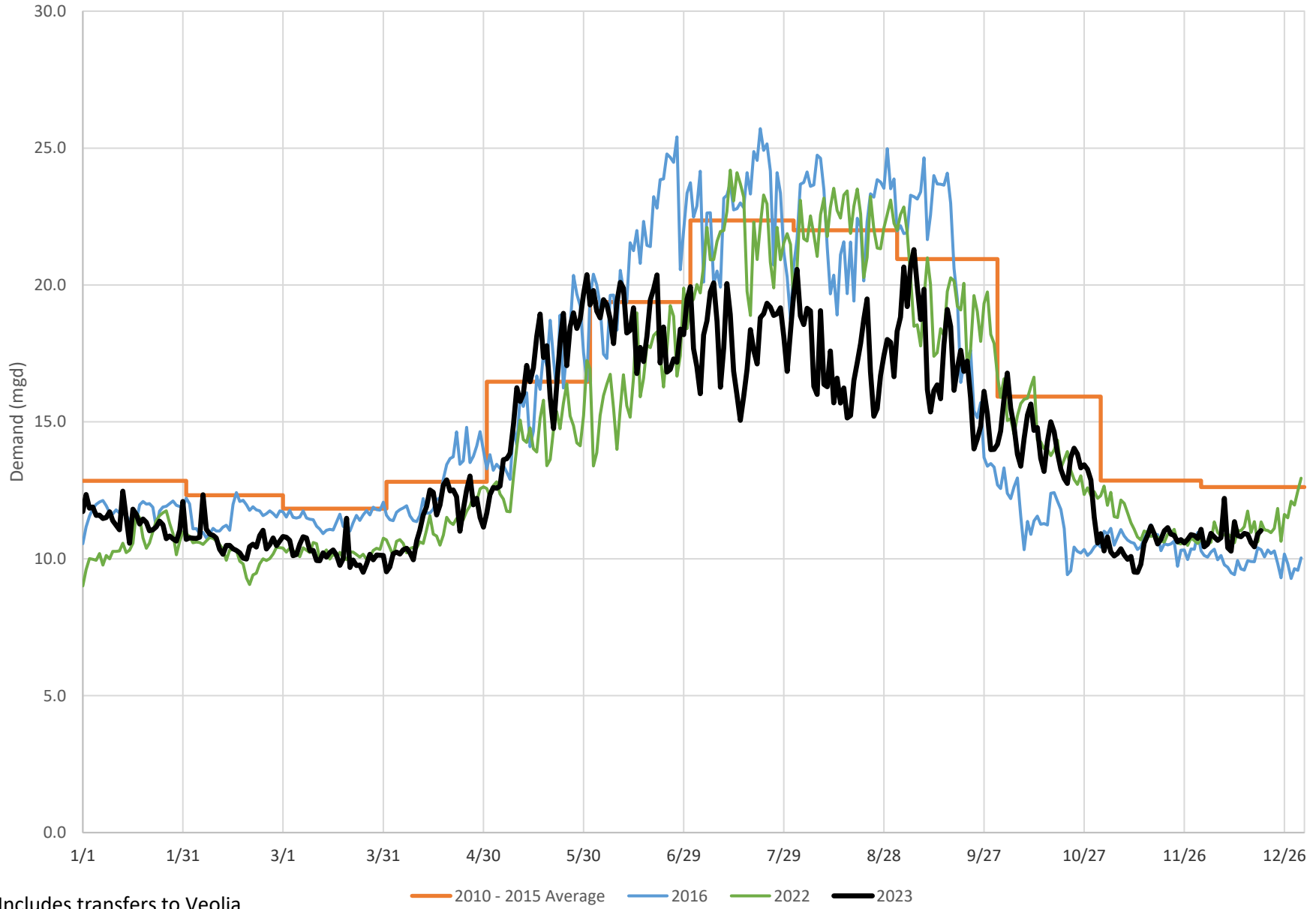


### Regional Water Demands 2022-2023





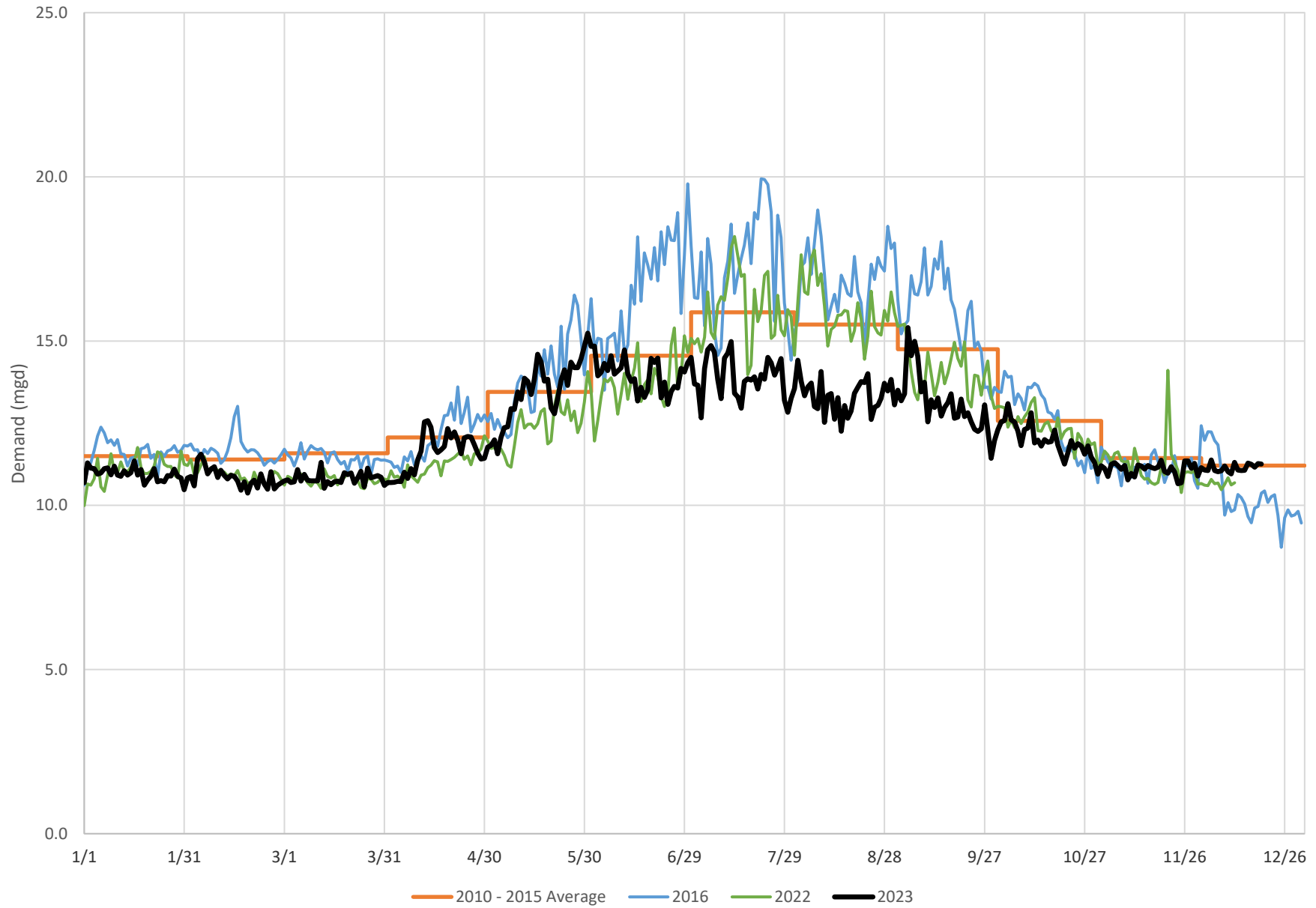
### Greenwich Demand Summary



Includes transfers to Veolia

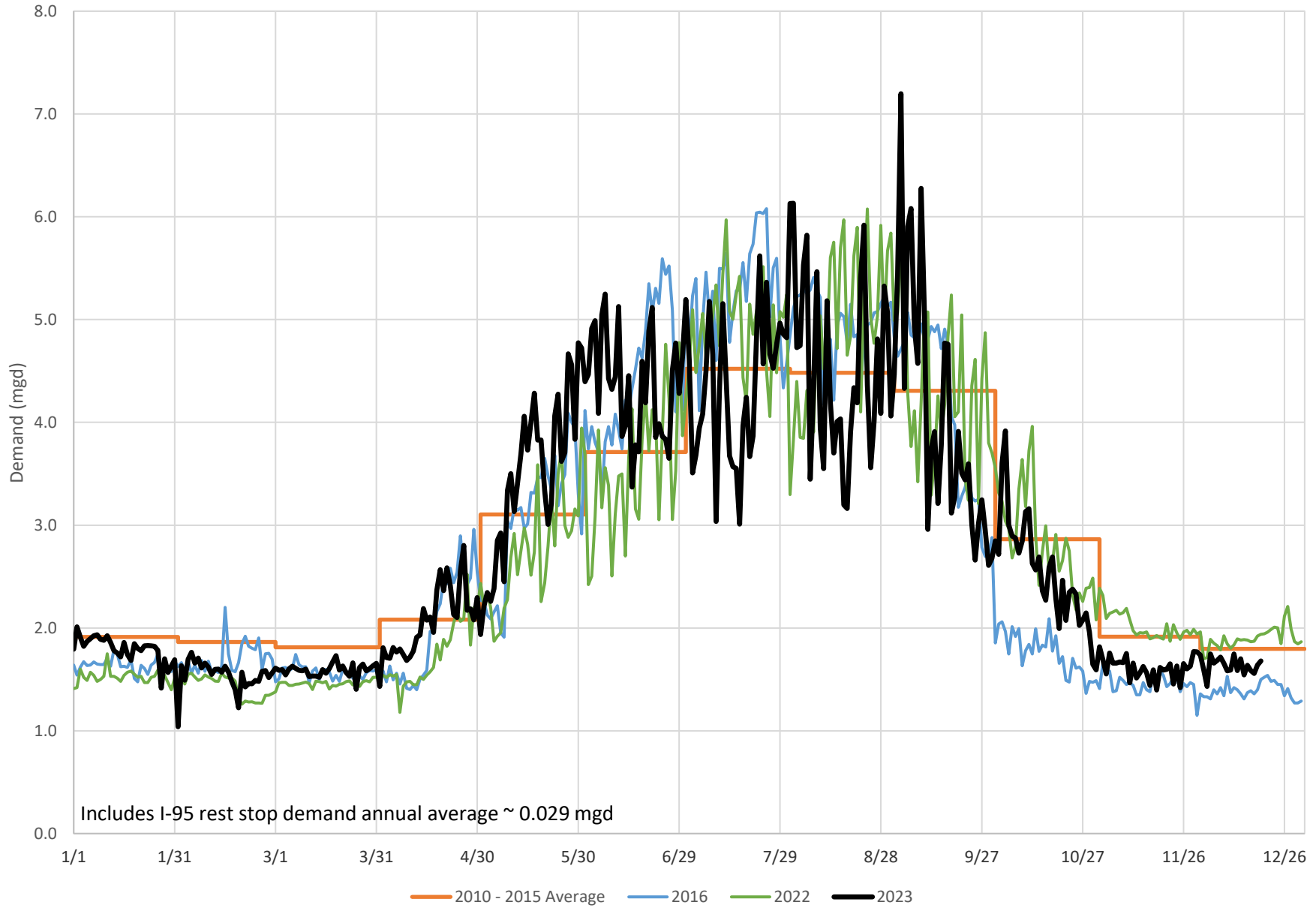


### Stamford Demand Summary



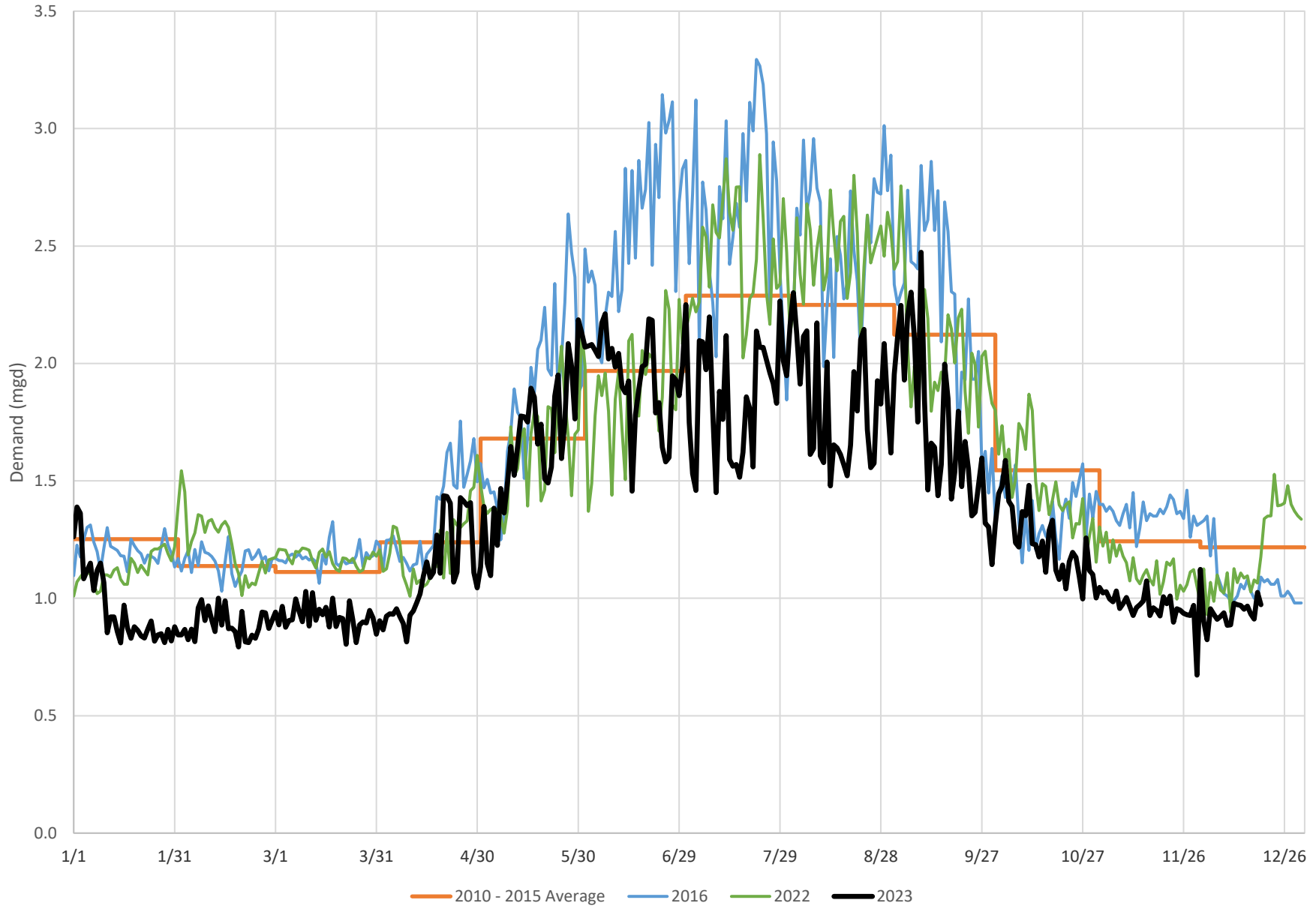


### Darien Demand Summary



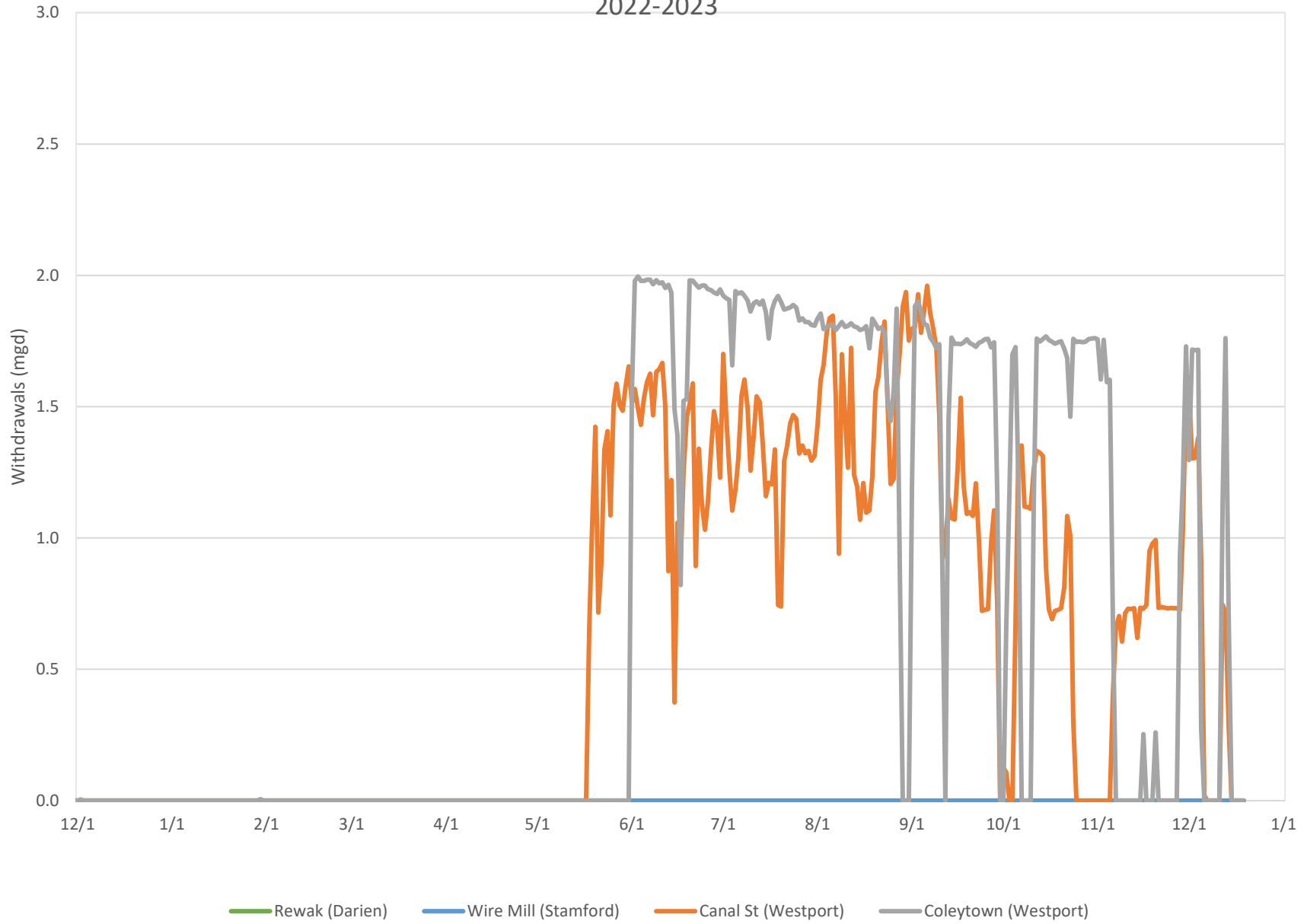


### New Canaan Demand Summary



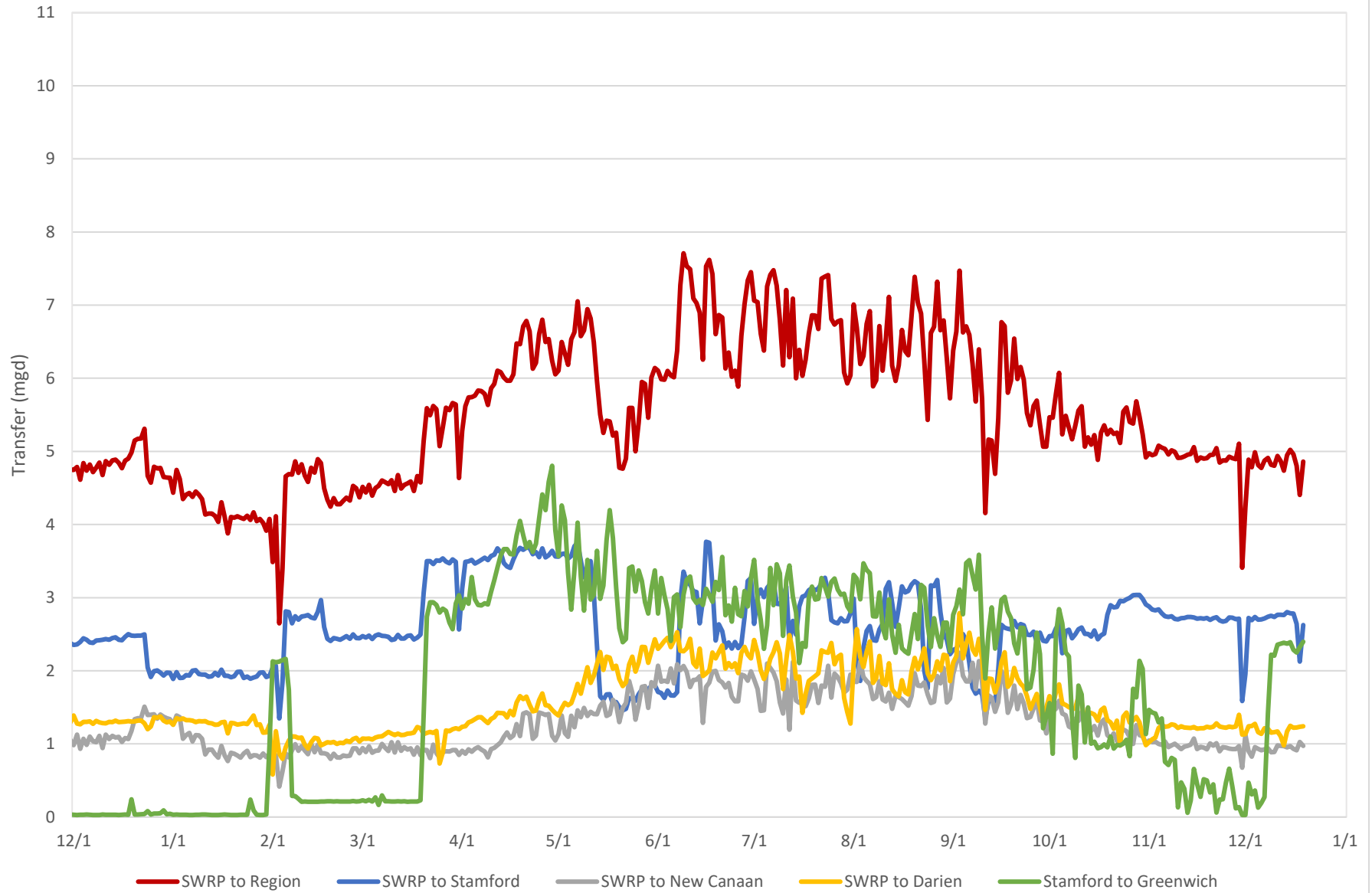


### Well Withdrawals 2022-2023



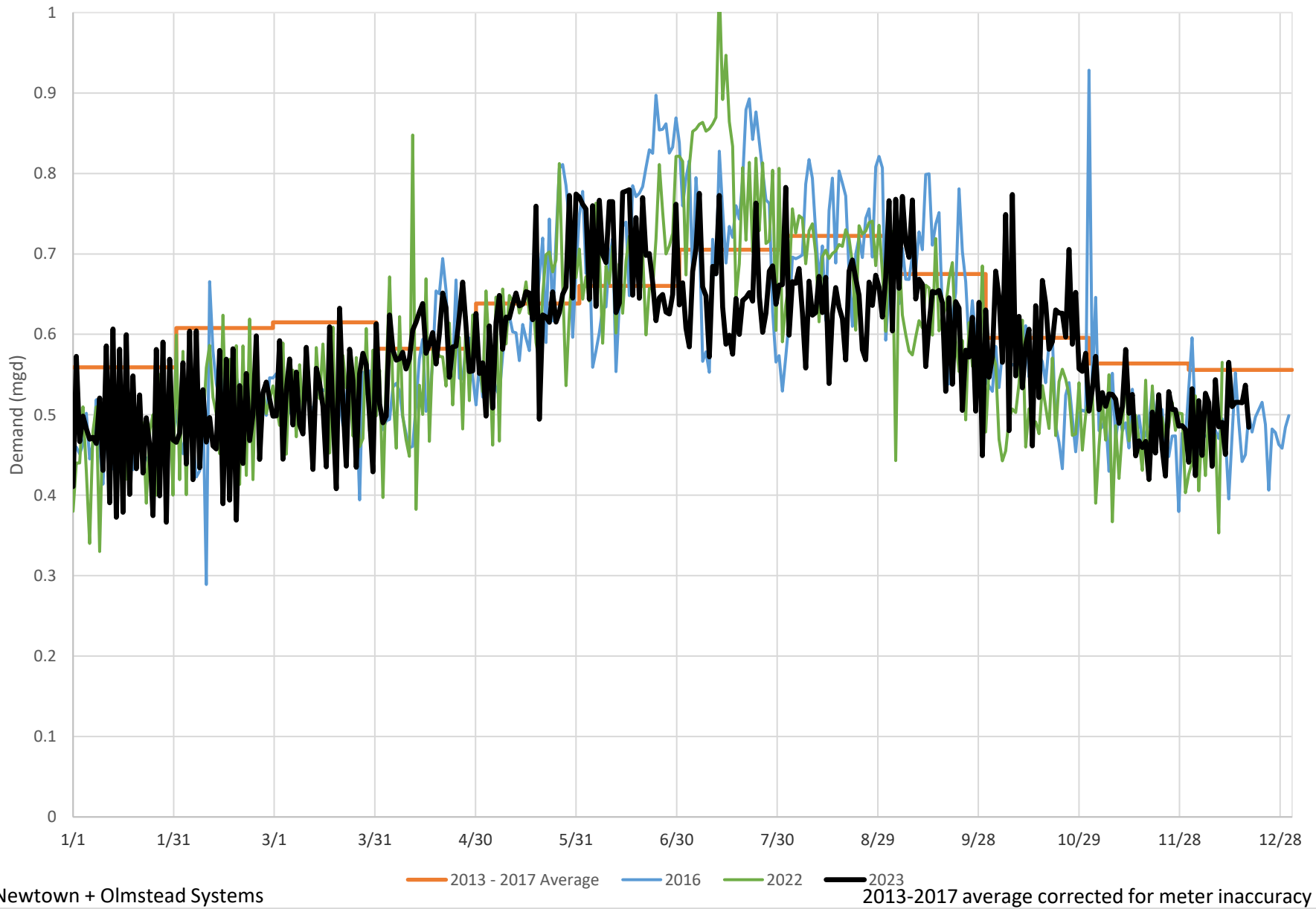


### Regional Water Transfers 2022-2023





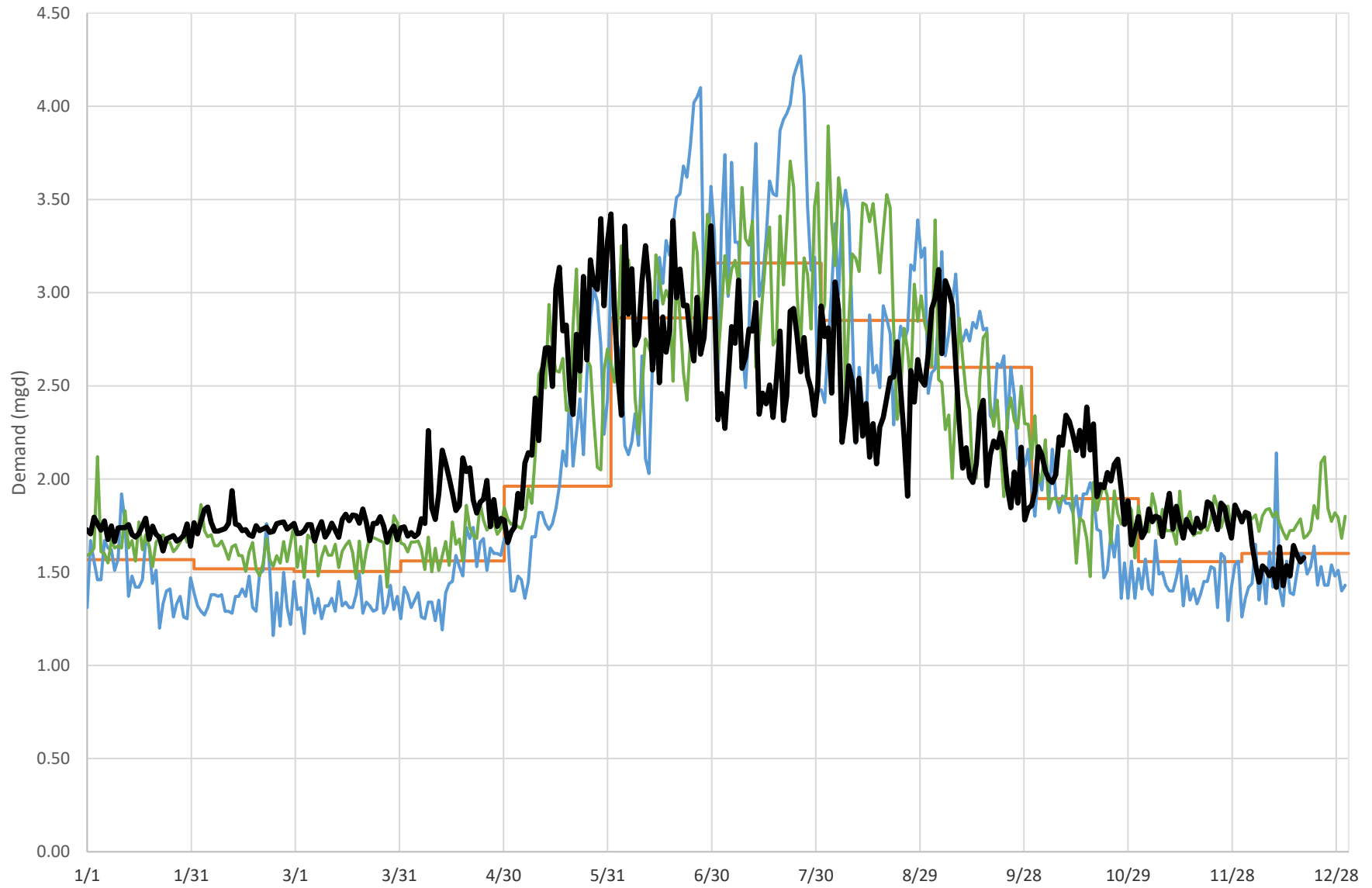
### Town of Newtown Demand Summary







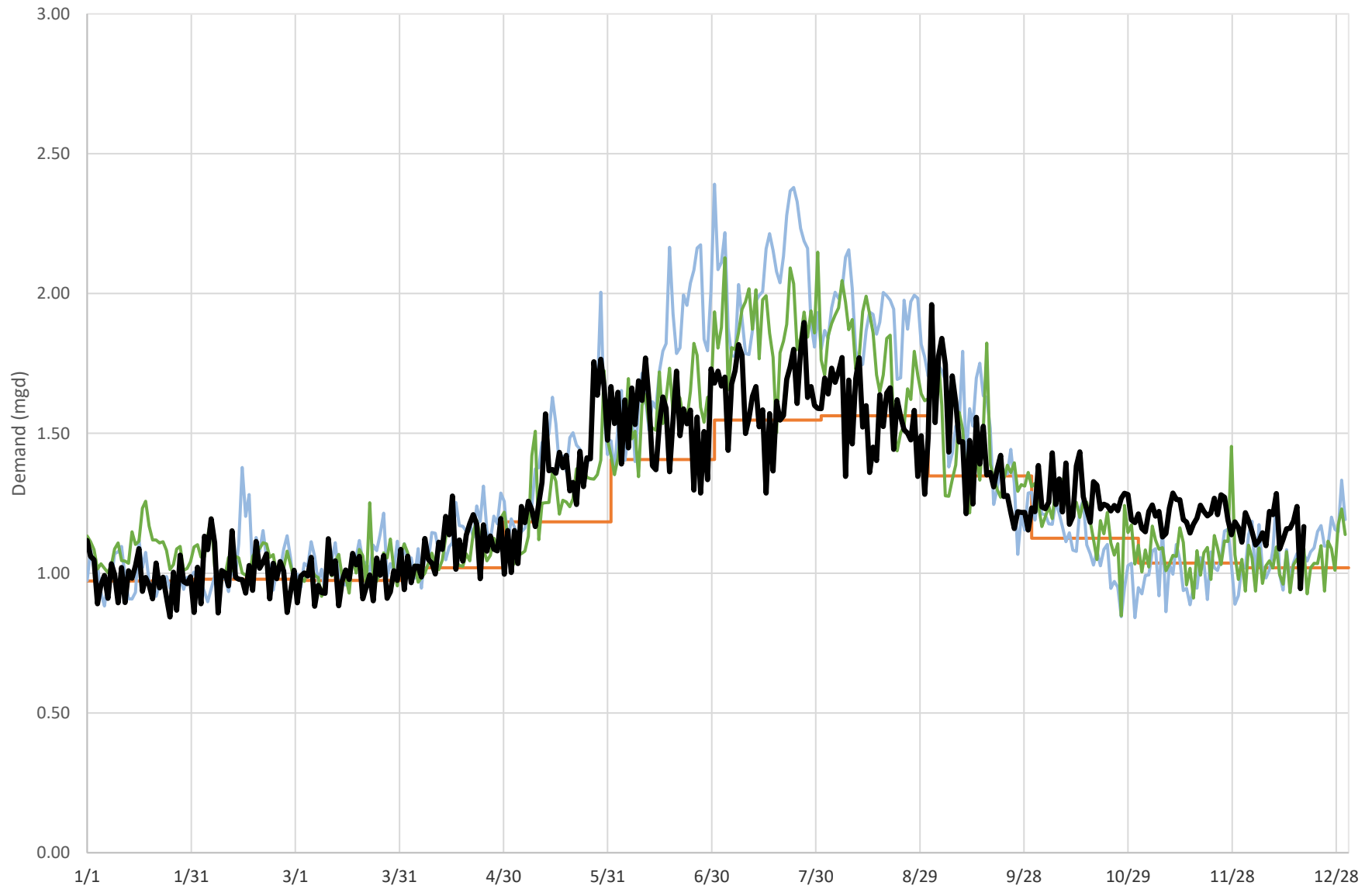
### Simsbury System Demand Summary



Includes Simsbury, Granby and East Granby — 2016 - 2020 Average — 2016 — 2022 — 2023



### Mystic System Demand Summary

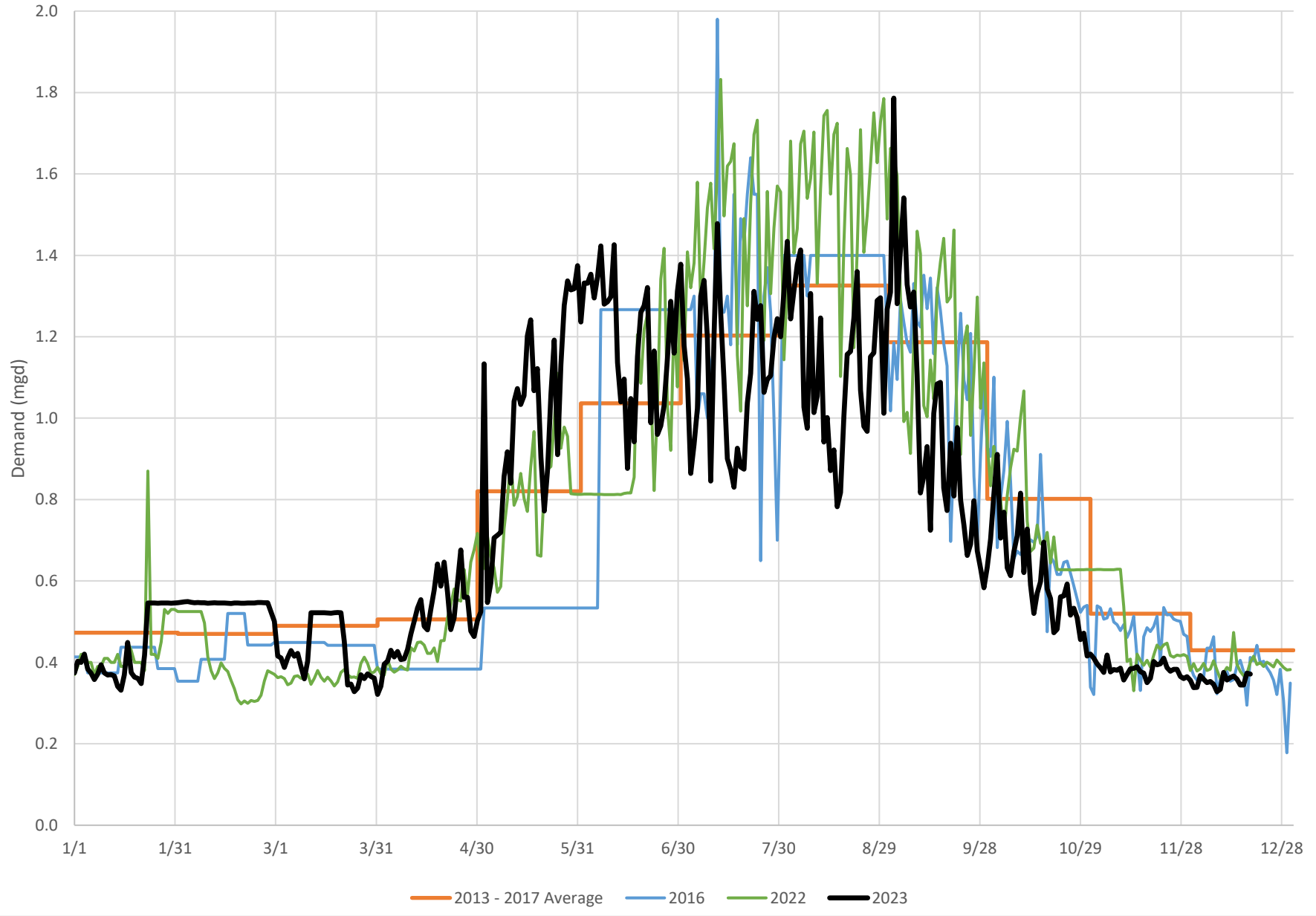


Includes Stonington and Groton

— 2017 - 2021 Average    — 2016    — 2022    — 2023  
2017 - 2021 average corrected for meter inaccuracy



### Westport North Ave Service Area Demand Summary





### Fairfield Greenfield Hill Service Area Demand Summary

